

We produce fluid power solutions



# Product Overview

Fluid & Motion Control  
Filter Solutions & Tank Systems  
Sensors & Measurement  
Fluid Management





# Content

Our products at a glance

## About us

About ARGO-HYTOS .....	4
Application Engineering .....	5

## Fluid & Motion Control

Directional Control Valves, Proportional Valves, Bankable modular valve assembly .....	7
Modular Valves, Screw-in Directional Valves, Pressure, Flow, Check and Motion Control Valves .....	8
Explosion Proof Valves, Electronic Controllers, Hydraulic Drives .....	9
Mobile Vehicles Suspensions and Boom Control Systems, Hydraulic Integrated Circuits, Power Units.....	10
Power Pack - Dock Levelers, Connecting Plates, Manifolds, Accessories .....	11

## Filter Solutions & Tank Systems

Suction Filters, Built-in Suction Filters, Return Filters, Return-Suction Filters .....	13
Pressure Filters, High Pressure Filters, High Pressure Safety Filters, Stainless Steel High Pressure Filters.....	14
Filling and Ventilating Filters, Desiccant Breathers, Clogging Indicators, Oil Level Gauges with Thermometer, Oil Level Dipsticks .....	15
Customized Filter Solutions, Filter Elements.....	16
Injection Molded Plastic Tanks, HIT - Hybrid Integrated Tank®, Quick-Connect Hose Connection System .....	17

## Sensors & Measurement

Portable Particle Counters, Stationary Particle Monitors, Lubrication Condition Sensors.....	19
Data Handling, Software .....	20

## Fluid Management

Off-line Filters, Off-line Filter Units.....	22
Oil Service Units, Dewatering Units, Compact Filter Pack .....	23

## A strong brand in fluid technology

We make your products better. Worldwide.



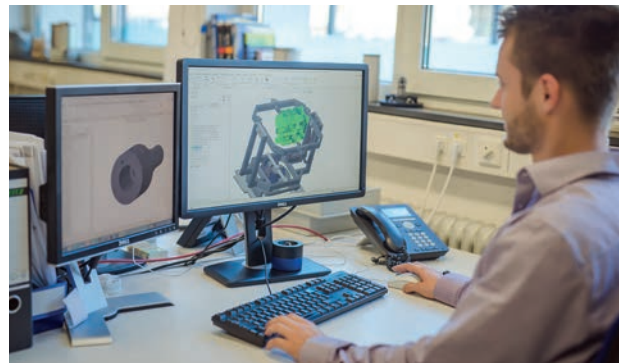
As a components and system supplier ARGO-HYTOS is an essential part in the supply chain of the world market leaders when it comes to mobile working machinery and mechanical engineering. ARGO-HYTOS has established an international network of production and distribution companies to provide the full support our successful global customers are accustomed to. We offer customer-oriented added value and expertise at the customers' location. With modern technical challenges becoming more complex as time goes on, it is vital to find system partners who can offer an integrated approach supported by outstanding experience, which they can contribute to projects and offer solutions for fluid power technology.

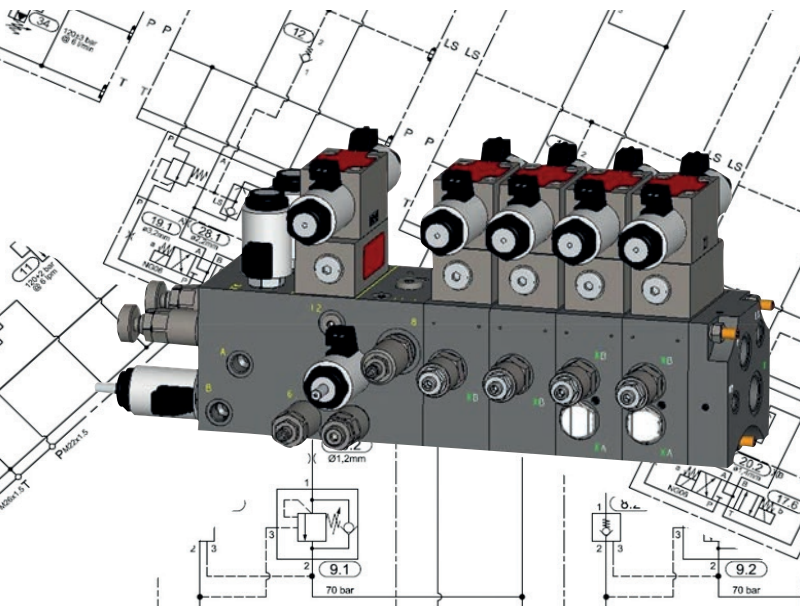
The ARGO-HYTOS Group is a global supplier of hydraulic system solutions. With around 1,600 employees and more than 75 years of experience in fluid & motion control and filtration, ARGO-HYTOS continues to set new standards in the hydraulics industry. Especially in mobile hydraulics the company has become an innovation leader.

We view ourselves as an international partner implementing innovative and individually designed system solutions together with our customers. The basis for this is a wide modular product range which can be flexibly expanded to customized solutions. Thereby we draw on our entire wealth of know-how and give new impetus to modern fluid power technology, time and again. ARGO-HYTOS owns a number of patents and in many cases has set new standards in its industry.

The ARGO-HYTOS Group owns production companies in Germany, the Czech Republic, India, China, Poland, Brazil as well as in the USA and is also represented through numerous international sales entities worldwide. In August 2022, ARGO-HYTOS has become part of the Voith Turbo division within the Voith Group.

ARGO-HYTOS aims to make a substantial contribution to improve customer products and sustainably ensure significant customer benefit.





## What APPLICATIONS stands for ...

- ... We develop, across all sites, system solutions for a **wide range of applications**: these solutions are based on combinations of standard and customized components, of all products designed and produced within the ARGO-HYTOS Group.
- ... We supplement these system solutions with **innovative, tailored products, based on technologies known and proven within the ARGO-HYTOS Group**.
- ... Together with our customers we develop system solutions that reflect the customers' demands regarding purchasing, production and sales - all the way to the aftermarket.
- ... More and more, **total cost of ownership and sustainability** are selling points for our customers which we support with our component and system solutions tailored to regional market needs.
- ... **Manufacturing expertise in valve, filtration, sensor and drive technology** enables us to find competent and flexible solutions.

## What APPLICATIONS Can Do for You ...

- ... You determine and define functionality – we provide possible solutions.
- ... You want to redesign, modernize or adapt your machine to a regional market – we have the system knowledge, the components and the project planning competence to help you realize it.
- ... We combine for you local and central value-added shares in order to meet the highest requirements with regard to function safety, reliability and cost effectiveness.
- ... We support your development team in projects from initial inquiry up to the start of series production.  
We maintain and observe highest internal standards in the processing of international projects in global core markets thanks to competent local contact persons and applications experts in our application centers.

### We speak the language of our customer

An understanding of the application and the functionality is the prerequisite for efficient and targeted solution finding.

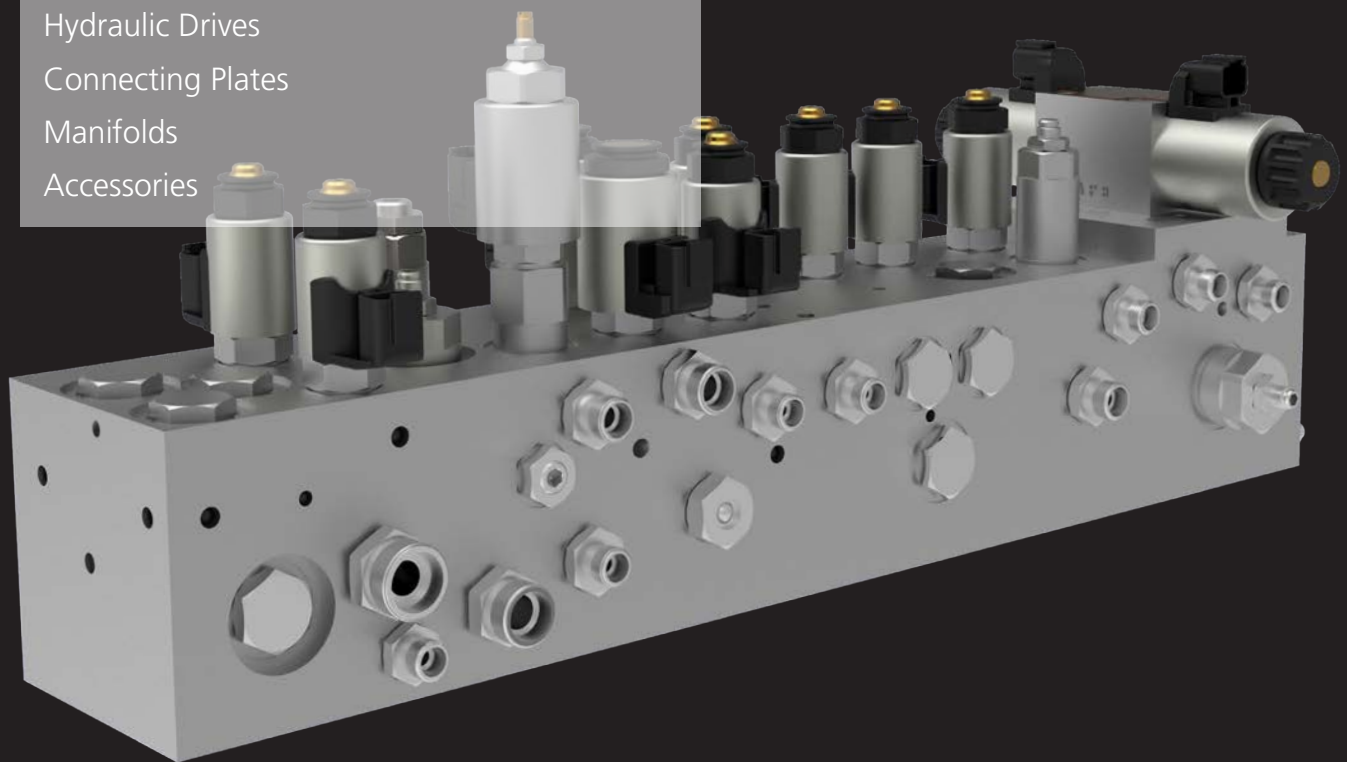
Our global sales organization provides the local communication and implementation platform, while the application engineering department contributes its technical and application expertise to the solution finding process.

Thanks to our extensive application know-how, we can assess functionalities and interactions and provide customers with comprehensive advice on their complex tasks.

We make your products better. **Worldwide.**



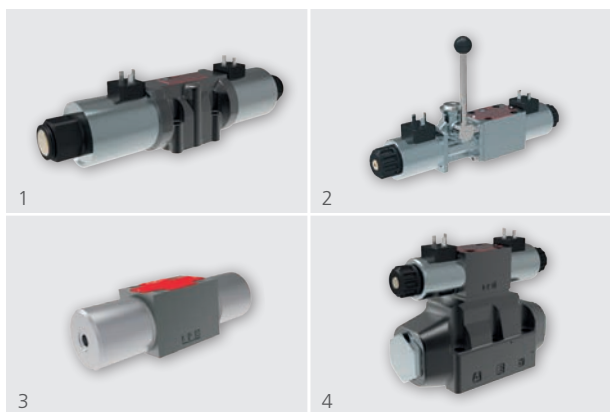
- Directional Control Valves
- Proportional Valves
- Bankable Modular Valve Assembly
- Modular Valves
- Screw-in Directional Valves
- Pressure, Flow, Check and Motion Control Valves
- Explosion Proof Valves
- Hydraulic Integrated Circuits
- Hydraulic Power Units
- Application Solutions with Controls
- Electronic Controllers
- Hydraulic Drives
- Connecting Plates
- Manifolds
- Accessories



# System Solutions

**You determine and define functionality –  
We provide possible solutions.**

## Directional Control Valves

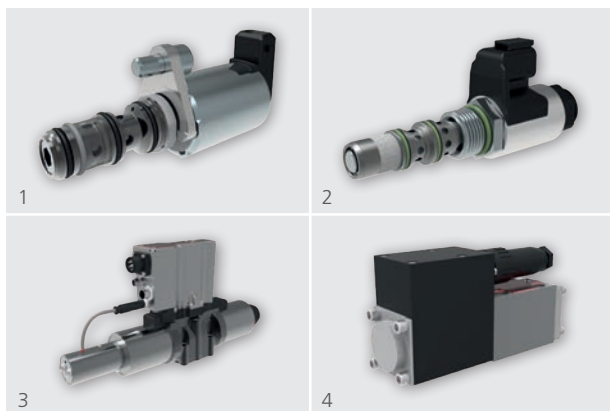


1 RPE4-10; 2 RPER3-06; 3 RPH3-06; 4 RNEH5-16

### Features

- › Nominal flow rate: up to 600 l/min (158 gpm)
- › Operating pressure: up to 350/420 bar (5100/6100 psi)
- › Nominal size: CETOP 02, 03, 05, 07, 08
- › Voltage: 12, 14, 24, 27, 48, 205 V DC  
24, 120, 230 V AC (50/60 Hz)
- › Connector plug: DIN/EN, Junior Timer, Deutsch
- › IP rating (EN 60529): 65, 67, 69K
- › Surface protection (ISO 9227): up to 520 h
- › UL, CSA certification
- › Special variants on request

## Proportional Valves

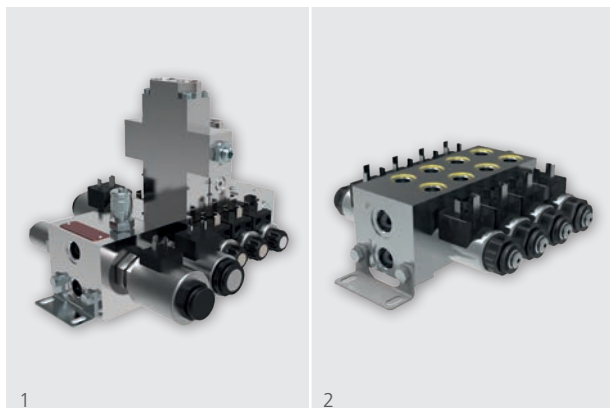


1 PP2P3-W3; 2 SP4P1-B4; 3 PRM9-10; 4 PRL2-06

### Features

- › Nominal flow rate: up to 140 l/min (37 gpm)
- › Operating pressure: up to 350 bar (5100 psi)
- › Function: pressure relief/reducing and flow control
- › Type: CETOP, screw-in and slip-in cartridge
- › Voltage: 12, 14, 24, 27, 48, 205 V DC  
24, 120, 230 V AC (50/60 Hz)
- › Connector plug: DIN/EN, Junior Timer, Deutsch
- › IP rating (EN 60529): 65, 67, 69K
- › Surface protection (ISO 9227): up to 520 h
- › CANopen connectivity possible / digital or analog on-board electronics / special variants on request

## Bankable modular valve assembly

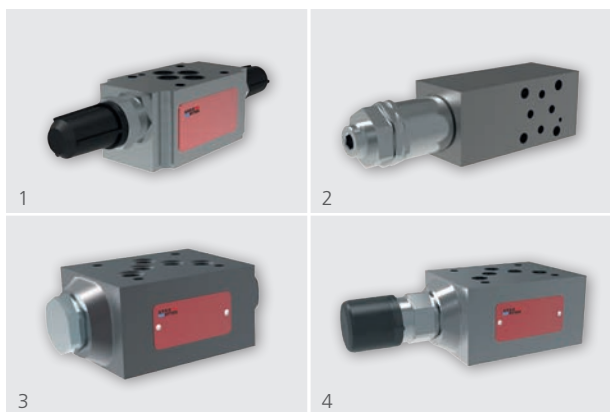


1 System Solutions; 2 RPEK

### Features

- › Nominal flow rate: up to 20 l/min (5 gpm) - per section
- › Operating pressure: up to 250 bar (3600 psi)
- › Port sizes: G $\frac{1}{4}$ , SAE6
- › Voltage: 12, 14, 24, 27 V DC
- › Connector plug: DIN/EN, Junior Timer, Deutsch
- › IP rating (EN 60529): 65, 67, 69K
- › Surface protection (ISO 9227): up to 520 h
- › Compact design, modular and space saving solution
- › Special variants on request

## Modular Valves: CETOP

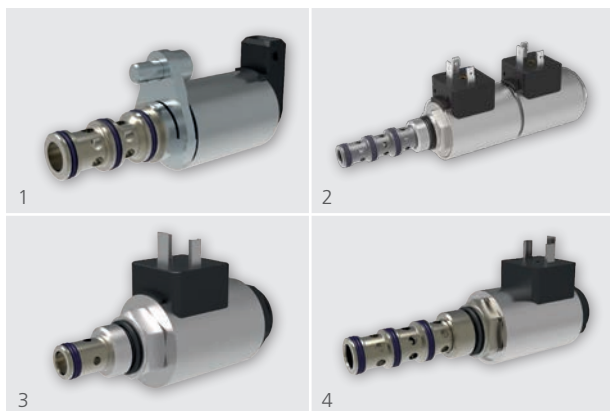


1 2VS3-06; 2 VPP2-04; 3 VRJ3-10; 4 VSO3-10

### Features

- › Nominal flow rate: up to 100 l/min (26 gpm)
- › Operating pressure: up to 350 bar (5100 psi)
- › Nominal size: CETOP 02, 03, 05
- › Function: pressure relief/reducing, check and flow control
- › Surface protection (ISO 9227): up to 520 h
- › Various adjusting options

## Screw-in Directional Valves



1 PD2E-W3; 2 PD2E-W3A; 3 SD2E-A2; 4 SD2E-B4

### Features

- › Nominal flow rate: up to 150 l/min (40 gpm)
- › Operating pressure: up to 420 bar (6100 psi)
- › Type: screw-in and slip-in cartridge
- › Voltage: 12, 14, 24, 27 V DC
- › Connector plug: DIN/EN, Junior Timer, Deutsch
- › IP rating (EN 60529): 65, 67, 69K
- › Surface protection (ISO 9227): up to 520 h

## Pressure, Flow, Check and Motion Control Valves



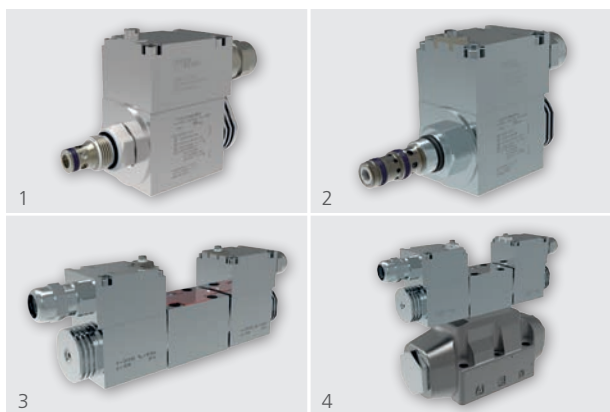
1 SD2H-LA3; 2 SO5A-BP3; 3 SP4A-B3; 4 SR1A-B2

### Features

- › Nominal flow rate: up to 150 l/min (40 gpm)
- › Operating pressure: up to 350/420 bar (5100/6100 psi)
- › Function: pressure relief/reducing and flow control, check and motion control
- › Surface protection (ISO 9227): up to 520 h
- › Various adjusting options



## Explosion Proof Valves



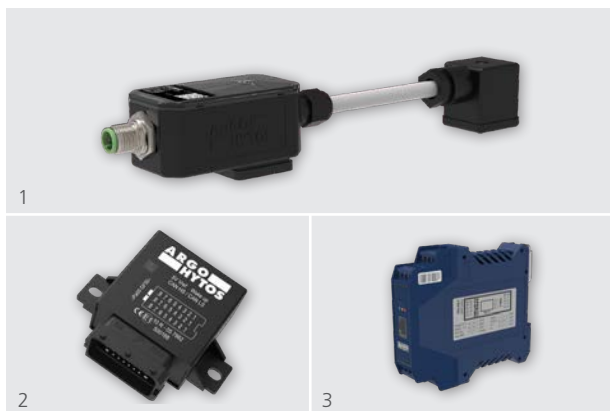
1 SD1EX-A2; 2 SD1EX-A3; 3 RPEX3-06; 4 RNEXH5-16



### Features

- › Nominal flow rate: up to 600 l/min (158 gpm)
- › Operating pressure: up to 350 bar (5100 psi)
- › Type: CETOP and screw-in cartridge
- › Function: directional, proportional, flow and pressure control valve
- › Voltage: 12, 24, 48, 110 V DC  
110, 230 V AC (50/60 Hz)
- › Acc. to directive ATEX 34/2014/EC, IECEx
- › Local certifications: EAC, Australia & NZ, CCC, PESO
- › Group: I (mining), IIG (gases), IID (dust)
- › EPL level: Mb, Gb, Db
- › Temperature class: T4, T5, T6
- › Various manual overrides

## Electronic Controllers



1 EL7; 2 Electronic Control Unit; 3 Digital Controller

### Features

- › Amplifier for direct assembly on the valves
- › Digital or analog amplifier electronics
- › Plug-in or rail mounting amplifiers
- › Easy-to-use adjustments
- › User friendly software

## Hydraulic Drives



1 GP1; 2 GP2L; 3 GP3; 4 RCA

### Features

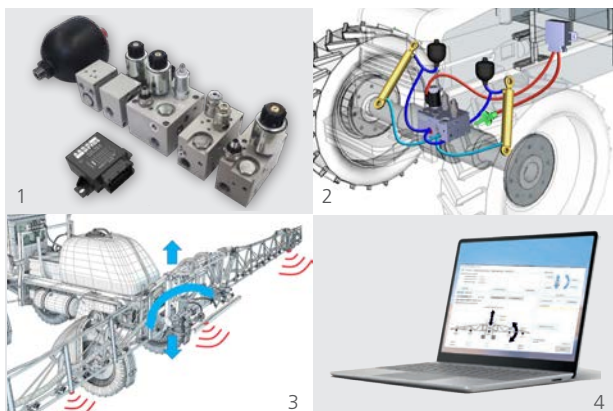
#### Gear Pumps

- › Displacement: up to 0.18-100 cm<sup>3</sup>/rev (cc/rev)
- › Operating pressure: up to 320 bar (5100 psi)
- › International standard flanges acc. to SAE, ISO, DIN, GOST
- › High quality aluminum alloys
- › High volumetric efficiency up to 98%
- › Lifetime 3000 working hours

#### RCA

- › Push to pressurize
- › Simple and reliable design
- › Built-in pressure and suction check valves
- › Handle beam can be rotated by 360°

## Mobile Vehicles Suspensions and Boom Control Systems



1 System components; 2 MHPs / MSC;  
3 SHC; 4 PC - parameterization software

### Hydro-Pneumatic Suspension System (MHPs/MSC)

- › Improving suspension performance
- › Easy and fast adaptation to the application
- › Reduces vibrations in axle, wheel, cabin and payload
- › Standard modules easily adaptable to specific applications
- › Flexible configurations of ECU

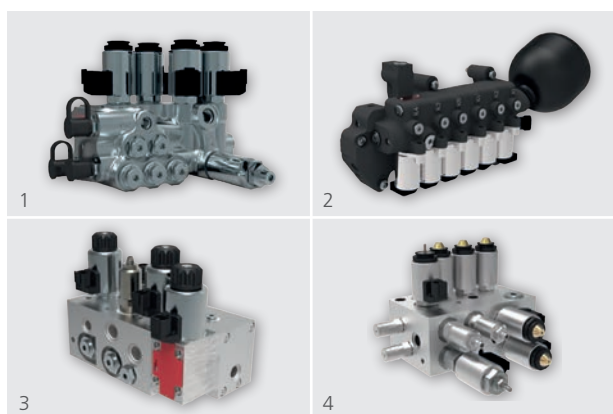
### Sprayer Height Control System (SHC)

- › Automatic height control of the spray boom
- › Usable with mechanical or hydropneumatic suspension
- › More accurate and economical spraying of agent

### Control Panel - Service tool software

- › Easy and intuitive parameterization
- › Monitor and diagnostic functions

## Hydraulic Integrated Circuits

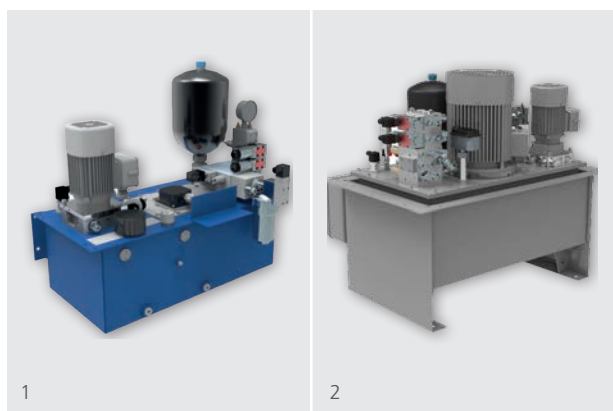


System Solution Blocks

### Features

- › Nominal flow rate: up to 600 l/min (158 gpm)
- › Operating pressure: up to 420 bar (6100 psi)
- › Customized systems and subsystems
- › Best solution and efficiency oriented design
- › Surface protection (ISO 9227): up to 520 h

## Power Units

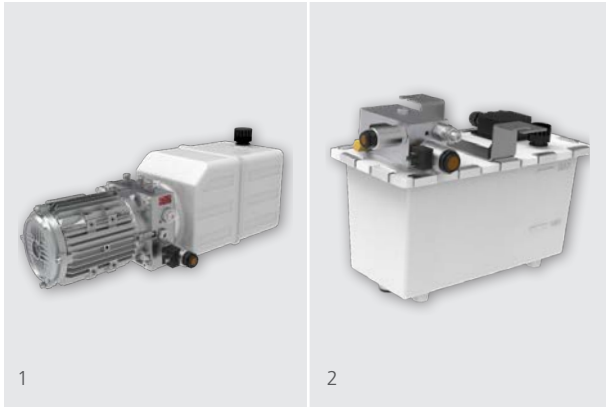


1; 2 Power Units

### Features

- › Nominal flow rate: up to 50 l/min (13 gpm)
- › Operating pressure: up to 250 bar (3600 psi)
- › Tank capacity: up to 250 liters (66 gallons)
- › Electric Motor Types:
  - 1~110 V (50/60 Hz)
  - 1~230 V (50/60 Hz)
  - 3~400/460 V (50/60 Hz)
  - 12/24 V DC
- › Special variants on request

## Power Pack - Dock Levelers

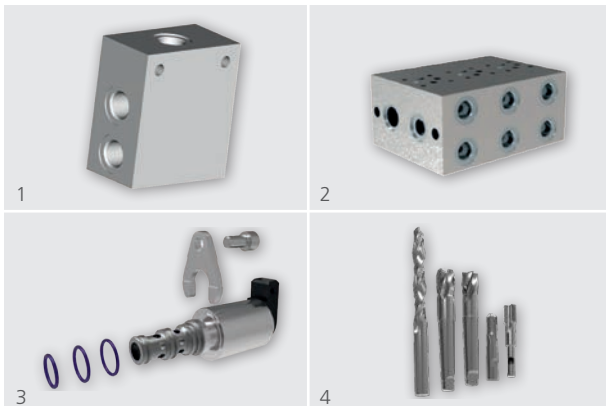


1; 2 Power Packs

### Features

- › Nominal flow rate: typically 6 l/min (1.6 gpm)
- › Operating pressure: typically 200 bar (2900 psi)
- › Tank capacity: typically 10 liters (2.6 gallons)
- › Electric Motor Types: 3~400/460 V (50/60 Hz)
- › Several hydraulics circuits for customized projects

## Connecting Plates, Manifolds, Accessories



1 SB; 2 DP; 3 SP; 4 SMT

### Features

- › Operating pressure: up to 320 bar (5100 psi)
- › Base plates
- › Serial plates
- › Sandwich plates
- › Sub-plates
- › Blanking plates
- › Surface protection (ISO 9227): up to 520 h
- › Spare Parts
- › Screw-In Cartridge Cavity Manufacturing Tools

We make your products better. **Worldwide.**



- Suction Filters
- Built-in Suction Filters
- Return Filters
- Return-Suction Filters
- Pressure Filters
- High Pressure Filters
- High Pressure Safety Filters
- Stainless Steel High Pressure Filters
- Filling and Ventilating Filters
- Desiccant Breathers
- Clogging Indicators
- Oil Level Gauges with Thermometer
- Oil Level Dipsticks
- Customized Filter Solutions
- Filter Elements
- Injection Molded Plastic Tanks
- HIT - Hybrid Integrated Tank®
- Quick-Connect Hose Connection System

# Filtration

## Filter Solutions & Tank Systems -

Your success is our priority

## Suction Filters & Built-in Suction Filters



1 AS 080; 2 S0.0426; 3 SFL 025; 4 ES 075

### Features

- › Nominal flow rate: up to 350 l/min (92 gpm)
- › Fineness: 100...280 µm(c)
- › Hose connection: 32...60.5 Ø
- › Connection: G½...G2½  
-12 SAE, -20 SAE
- › Suction filters to be installed in the suction line of the pump. With thread or hose connection. For in-tank, side-tank and in-line mounting.
- › Many series in High Performance and Lightline version available.

## Return Filters



1 D 170; 2 E 103; 3 E 222; 4 E 503

### Features

- › Nominal flow rate: up to 900 l/min (238 gpm)
- › Operating pressure: up to 10 bar (145 psi)
- › Fineness: 5...100 µm(c)
- › Hose connection: Ø 17.5...Ø 20.5
- › Connection: G½...G2½  
SAE 2...SAE 2½  
-12 SAE...-24 SAE
- › In-line, tank-top mounting or for mounting in a separate return flow tank section, optionally with integrated replaceable ventilating filter [2 µm(c)], air separation or extension pipe and diffuser.
- › Many series in High Performance and Lightline version available.

## Return-Suction Filters

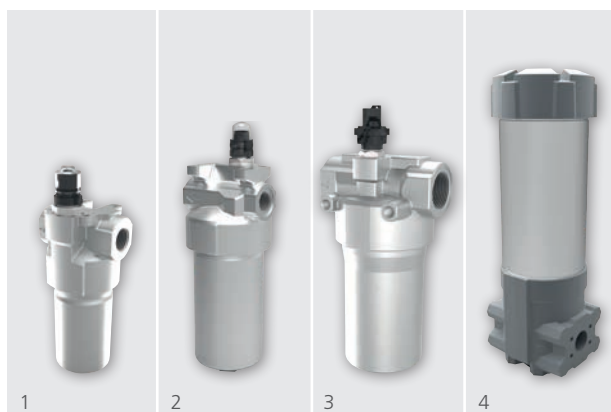


1 RST 084; 2 E 088; 3 E 198; 4 E 998

### Features

- › Nominal flow rate: up to 850 l/min (225 gpm)
- › Operating pressure: up to 10 bar (145 psi)
- › Fineness: 10, 16 µm(c)
- › Connection: G¾...G1½  
SAE 1½...SAE 2½  
-12 SAE...-24 SAE
- › In-line or tank-top mounting, with boost pump connection (0.5 bar charge pressure) for hydrostatic drives.
- › Many series in High Performance and Lightline version available.

## Pressure Filters

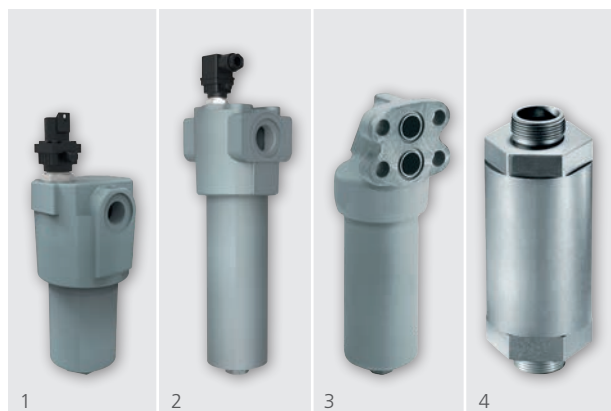


1 D 042; 2 D 072; 3 D 162; 4 FNL 1000

### Features

- › Nominal flow rate: up to 2000 l/min (528 gpm)
- › Operating pressure: up to 100 bar (1450 psi)
- › Fineness: 5...30 µm(c)
- › Connection: G½...G2½  
-8 SAE...-24 SAE
- › In-line mounting, optionally with electrical and / or optical clogging indicator.

## High Pressure Filters & High Pressure Safety Filters



1 HD 049; 2 HD 172; 3 HD 414; 4 HD 081

### Features

- › Nominal flow rate: up to 1000 l/min (264 gpm)
- › Operating pressure: up to 600 bar (8702 psi)
- › Fineness: 5...100 µm(c)
- › Flange connection: 2 x Ø 15, 2 x Ø 31
- › Connection: G½...G1½  
-8 SAE...-24 SAE  
SAE 1¼...SAE 2
- › Filter kits: M65 x 1.5...M108 x 1.5
- › Block mounting / inline mounting / flange connection, optionally reverse flow function, clogging indicator electrical and / or optical.

## Stainless Steel High Pressure Filters



HFL 155

### Features

- › Nominal flow rate: up to 200 l/min (53 gpm)
- › Pressure: up to 630 bar (9137 psi)
- › Fineness: 10...60 µm(c)
- › Connection: G½...G1
- › In-line mounting, with optical clogging indicators. Other designs are available on request. Due to stainless steel suitable for almost all media and applications.

## Filling and Ventilating Filters & Desiccant Breathers



1 L1.0506; 2 LE.0817; 3 VFT-2500; 4 LT.1021

### Features

- › Air flow: up to 2500 l/min (660 gpm)
- › Oil flow: up to 140 l/min (37 gpm)
- › Fineness: 2 µm(c)
- › Connection: G $\frac{3}{4}$ ...G1 $\frac{1}{4}$   
-12 SAE...-20 SAE  
 $\frac{3}{4}$  - 14 NPT  
6-hole  
M18 x 1.5...M60 x 2
- › Regulation of pressure changes in the reservoir and oil level monitoring. Options: Double check valve, dipstick, "Vandalism proof" types.  
Desiccant breathers additionally prevent the penetration of humidity into the tank.

## Clogging Indicators



1 DG 062/DG 064; 2 DG 200; 3 DG 819; 4 DG 040/041

### Manometers

- › Optical: green / red -0.25, 1.0 / 2.0 bar  
(-3.6, 14.5 / 29 psi)

### Pressure switches

- › Electrical: Switching pressure -0.15, -0.25, 1.2...2.5 bar  
(-2.18, -3.6, 17.4...36 psi)

### Differential pressure indicators

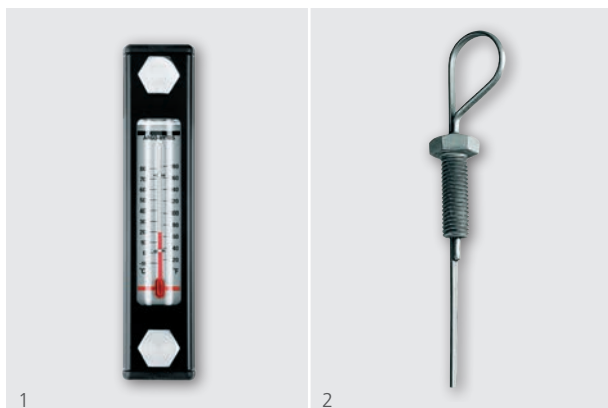
- › Optical: Response pressure 2...5 bar (29...73 psi)

### Differential pressure switches

- › Electrical / optical Switching pressure 1.2...5 bar (17.4...72.5 psi)

- › Monitors the clogging condition of suction, return, return-suction, pressure and high-pressure filters.

## Oil Level Gauges with Thermometer & Oil Level Dipsticks



1 C5; 2 C4

### Features Oil Level Gauges

- › Level range: 33...194 mm  
(1.3...7.6 inch)
- › Temperature scale: -10...+80 °C (+14...+176 °F)
- › Indicates the oil level and the oil temperature in hydraulic oil or lubricant reservoirs.

### Features Oil Level Dipsticks

- › Dipstick length: 100...640 mm  
(3.94...25.2 inch)
- › Bolt thread: M10
- › Checks the oil level in hydraulic oil or lubricant reservoirs.

## Customized Filter Solutions



1 E 077; 2 D 145; 3 E 599; 4 LS 250

### Features

- › Customized filter and system solutions developed for special applications and designed in cooperation with our customers.

## Filter Elements



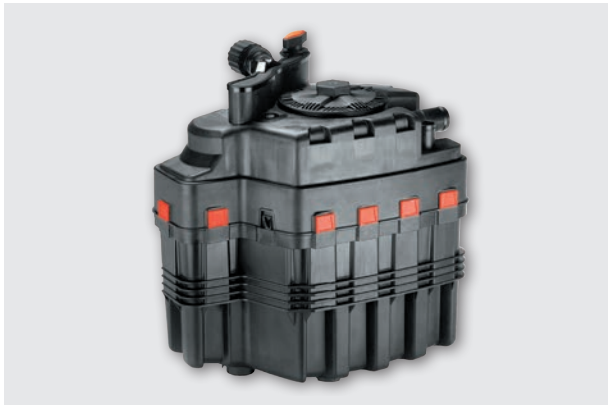
1 Paper Element; 2 EXAPOR®MAX 3; 3 Screen Element;  
4 Custom Labeled Element

### Features

- › Glass Fiber Elements
  - EXAPOR®MAX 3
  - EXAPOR®Light
  - EXAPOR®SPARK PROTECT
  - EXAPOR®AQUA
- › Paper Elements
- › Screen Elements
- › Polyester Elements
- › ReFit-Elements
  - in all available materials



## Injection Molded Plastic Tanks



Injection Molded Tank

### Features

- › Tank capacity:  $V_{\max}$  up to 60 l (16 gal)
- › Temperature:  $T_{\max}$ : -30 °C...+100 °C (-22 °F...+212 °F)  
Short-term up to +120 °C (+248 °F)
- › Filter function: Return filter 10...30 µm(c)  
Return-suction filter 10, 16 µm(c)  
Suction filter 16...280 µm(c)  
Ventilating filter 2 µm(c)  
Filling filter 140...450 µm(c)
- › Customized design with integrated functions
- › Particularly attractive with large quantities required

## HIT - Hybrid Integrated Tank®



Hybrid Tank

### Features

- › Tank capacity:  $V_{\max}$  up to 150 l (40 gal)
- › Temperature:  $T_{\max}$ : -30°C...+100°C (-22...+212 °F)  
Short-term up to +120 °C (+248 °F)
- › Filter function: Return filter 10...30 µm(c)  
Return-suction filter 10, 16 µm(c)  
Suction strainer 140...280 µm(c)  
Ventilating filter 2 µm(c)  
Filling filter 140...450 µm(c)
- › Customized design with integrated functions
- › Especially suitable for small quantities

## Quick-Connect Hose Connection System



Quick-Connect System

### Features

- › Temperature:  $T_{\max}$ : -30 °C...+100 °C (-22 °F...+212 °F)  
Short-term up to +120 °C (+248 °F)
- › Pressure: up to 10 bar (14.5 psi)
- › Innovative hose connection technology
- › Assembly without any tools
- › Freely rotatable 360°

We make your products better. **Worldwide.**

Portable Particle Counters  
Stationary Particle Monitors  
Lubrication Condition Sensors  
Data Handling  
Software



# Industry 4.0

**Predictive Maintenance –**

Enter the digital way of Condition Monitoring!

## Portable Particle Counters



1 OPCom Portable Oil Lab; 2 OPCount

### Features

- › The OPCom Portable Oil Lab is a mobile oil laboratory with which the oil cleanliness and the oil condition in hydraulic and lubrication systems can be measured quickly and easily.
- › The OPCount is a particle counter, designed for stationary or mobile operation. With its touch display and keypad it can be easily operated anywhere.

## Stationary Particle Monitors



1 OPCom; 2 OPCom Phosphate Ester; 3 OPCom without Display; 4 OPCom FerroS

### Features

- › The OPCom Particle Monitor is a compact particle monitor for continuous monitoring of the contamination in hydraulic fluids and lubricants.
- › Special variants are available - for monitoring aggressive fluids, such as phosphate ester, or a version without display for harsh conditions, among others.
- › The OPCom FerroS is an intelligent screw-in sensor to monitor ferromagnetic wear in hydraulic and lubrication systems.

## Lubrication Condition Sensors



1 LubCos Level; 2 LubCos H<sub>2</sub>O+ II

### Features

- › Stationary screw-in sensor for the continuous determination of the oil condition, humidity and temperature in hydraulic and lubricating oils as well as for measuring the fluid level.

## Data Handling



1 LubMon Connect; 2 LubMon Visu

### Features

- › The LubMon Connect is a remote gateway for connection of ARGO-HYTOS sensors via a CANopen interface. The data of the connected sensors are automatically transferred to a web database and can be displayed or exported via a website.
- › LubMon Visu is a display unit, suitable for panel-mounting, with integrated data memory for connection of various sensors. ARGO-HYTOS offers a wide range of compatible sensors for monitoring of hydraulic and lubricating fluids. These are, amongst others, particle monitors, temperature, humidity and oil aging sensors.

## Software



LubMon PCLight

### Features

- › The software LubMon PCLight allows recording, storing and visualizing the incoming data from the condition sensors LubCos H<sub>2</sub>O, LubCos H<sub>2</sub>O+ II, LubCos Level, LubCos Vis+ and OPCOM Particle Monitor.

We make your products better. **Worldwide.**

Off-line Filters  
Off-line Filters Units  
Oil Service Units  
Dewatering Units  
Compact Filter Pack



# Oil Services

**Fluid Management –**  
Keep your oil clean and smooth!

## Off-line Filters



1 FN 300; 2 FNS 040

### Features

- › Nominal flow rate: up to 650 l/min (172 gpm)  
(with flow control valve: up to 6 l/min (1.6 gpm))
- › Operating pressure: up to 12 bar (174 psi)  
(with flow control valve: up to 350 bar (5100 psi))
- › Fineness: 3, 5, 10  $\mu\text{m(c)}$
- › Connection: G $\frac{1}{4}$ ...G1, SAE 2 $\frac{1}{2}$
- › Off-line filters for application in low pressure circuits or with flow control valve for connection to the high pressure line
- › Special variants on request

## Off-line Filter Units



1 FNAPC 045; 2 FNA 008

### Features

- › Nominal flow rate: up to 45 l/min (12 gpm)
- › Operating pressure: up to 6 bar (90 psi)
- › Viscosity range: up to 2000 mm $^2$ /s
- › Fineness: 3, 5, 10  $\mu\text{m(c)}$
- › Electric motor types: 1~110 V (50...60 Hz)  
1~230 V (50...60 Hz)  
3~400 V / 460 V (50...60 Hz)  
24 V DC
- › Connection: up to G1 $\frac{1}{4}$
- › For first fit or for retrofitting in existing systems
- › Optionally with particle monitor and oil condition sensor

## Oil Service Units

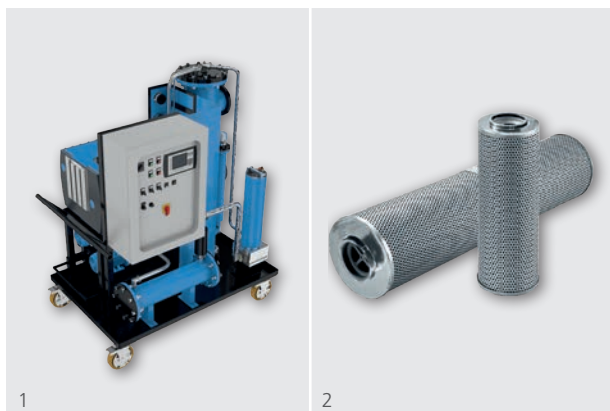


1 FAPC2; 2 UMPC2

### Features

- › Nominal flow rate: up to 70 l/min (18.5 gpm)
- › Operating pressure: up to 6 bar (90 psi)
- › Viscosity range: up to 5000 mm<sup>2</sup>/s
- › Fineness: 3, 5, 10, 16 µm(c)
- › Electric motor types:
  - 1~110 V (50...60 Hz)
  - 1~230 V (50...60 Hz)
  - 3~400 V / 460 V (50...60 Hz)
  - 24 V DC
- › Filter Units for cleaning in off-line filtration or for filling systems with ultra-fine filter elements  
Optionally with particle monitor
- › Special variants on request

## Dewatering Units



1 OPS 550; 2 Exapor AQUA

### Features

- › Nominal flow rate: up to 50 l/min (13.2 gpm)
- › Operating pressure: up to 4 bar (60 psi)
- › Fineness: 3, 5, 10 µm(c)
- › With dewatering units, large quantities of free water can be removed from the oil.  
The water content is constantly monitored with the water sensor LubCos H<sub>2</sub>O+ II.

### Water Absorbing Filter Elements

- › Small quantities of remaining water can be withdrawn by water absorbing filter elements. Water absorbing filter elements fit in standard versions of off-line filters and filter units.

## Compact Filter Pack CFP 03 - exclusive solution for small tanks



1 CFP 03; 2 Suction-Return Set

### Features

- › Ergonomic design
- › Ultralight and compact
- › Multi-purpose system
- › Simplifies servicing of small power packs
- › Nominal flow rate up to 4 l/min (1 gpm)
- › Working pressure 3.5 bar (50 psi)
- › Weight 9 kg
- › Filter fineness 5, 10, 16 µm
- › Electric motor with switch
- › Hydraulic hoses included
- › Additional adapter for servicing of tanks with only one available connecting port

**International**

## ARGO-HYTOS worldwide

<b>Benelux</b>	ARGO-HYTOS B.V.	info.benelux@argo-hytos.com
<b>Brazil</b>	ARGO-HYTOS Fluid Power Systems Ltda.	info.br@argo-hytos.com
<b>China</b>	ARGO-HYTOS Fluid Power Systems	info.cn@argo-hytos.com
<b>Czech Republic</b>	ARGO-HYTOS s.r.o ARGO-HYTOS Protech s.r.o	info.cz@argo-hytos.com info.protech@argo-hytos.com
<b>France</b>	ARGO-HYTOS SAS	info.fr@argo-hytos.com
<b>Germany</b>	ARGO-HYTOS GMBH	info.de@argo-hytos.com
<b>Great Britain</b>	ARGO-HYTOS Ltd.	info.uk@argo-hytos.com
<b>Hong Kong</b>	ARGO-HYTOS Hong Kong Ltd.	info.hk@argo-hytos.com
<b>India</b>	ARGO-HYTOS PVT. LTD.	info.in@argo-hytos.com
<b>Italy</b>	ARGO-HYTOS S.r.l.	info.it@argo-hytos.com
<b>Poland</b>	ARGO-HYTOS Polska spz o.o.	info.pl@argo-hytos.com
<b>Sweden</b>	ARGO-HYTOS Nordic AB	info.se@argo-hytos.com
<b>Turkey</b>	ARGO-HYTOS Hidrolik Ekip. San. ve Tic. Ltd. Şti.	info.tr@argo-hytos.com
<b>USA</b>	ARGO-HYTOS Inc.	info.us@argo-hytos.com

