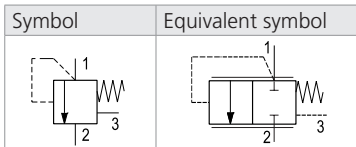
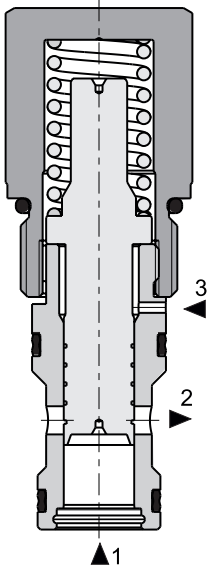


SL2H-BP3/H2I12

7/8-14 UNF • Q_{max} 80 l/min (21 GPM) • p_{max} 350 bar (5100 PSI)

SL2H-BP3/H2I12*



Technical Features

- › 3 Way Pressure Compensator or main stage of pilot operated pressure relief or sequence valve
- › High flow capacity
- › The valve maintains a constant pressure drop on a flow control valve (e.g. proportional directional control valve) and thus a constant volumetric flow independent of actuator load
- › SL2H-BP3/H2I12*D05* valve is usable as the main stage of pilot operated pressure relief valve
- › Rapid and smooth response to load changes
- › Stable function throughout the whole flow range
- › Hardened precision parts
- › Pressure drop adjustable
- › In the standard version, the valve is zinc-coated for 520 h protection acc. to ISO 9227

Technical Data

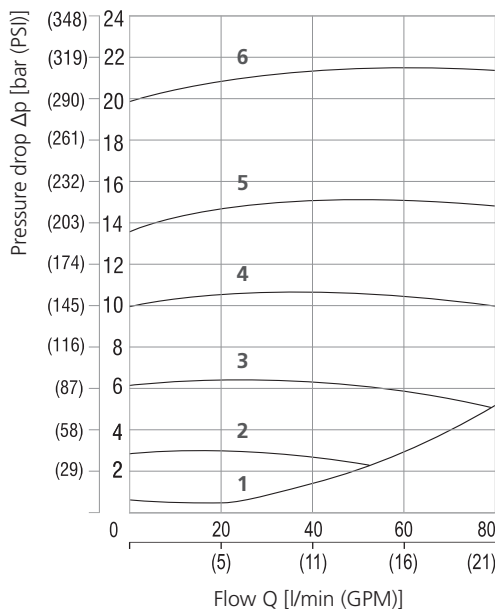
Valve size / Cartridge cavity		7/8-14 UNF-2A / BP3 (C-10-3S)
Max. operating pressure	bar (PSI)	350 (5080)
Max. flow	l/min (GPM)	80 (21)
Fluid temperature range (NBR)	°C (°F)	-30 ... +100 (-22 ... +212)
Fluid temperature range (FPM)	°C (°F)	-20 ... +120 (-4 ... +248)
Hysteresis	%	< 5
Weight (acc. to type of pressure adjustment)	C	0.18 (0.39)
	S	0.28 (0.62)
	A	0.41 (0.90)

		Datasheet	Type
General information		GI_0060	Products and operating conditions
Valve bodies	In-line mounted	SB_0018	SB-BP3*
	Sandwich mounted	SB-04(06)_0028	SB-BP3*
Cavity details / Form tools		SMT_0019	SMT-BP3*
Spare parts		SP_8010	

Characteristics measured at $v = 32 \text{ mm}^2/\text{s}$ (156 SUS)

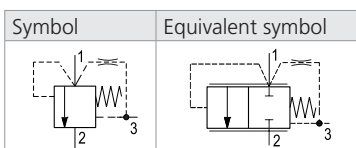
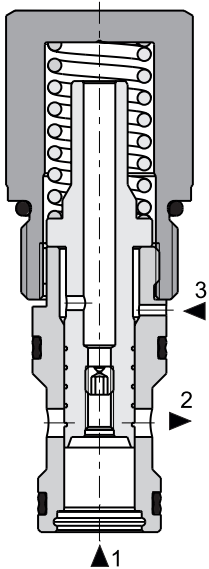
Pressure drop related to flow rate

direction 1 → 2, port 3 without pressure



Pressure level		
6	200	20 bar (290 PSI)
5	140	14 bar (203 PSI)
4	100	10 bar (145 PSI)
3	060	6,0 bar (87 PSI)
2	030	3,0 bar (44 PSI)
1	005	0,5 bar (7 PSI)

SL2H-BP3/2I12*D05*



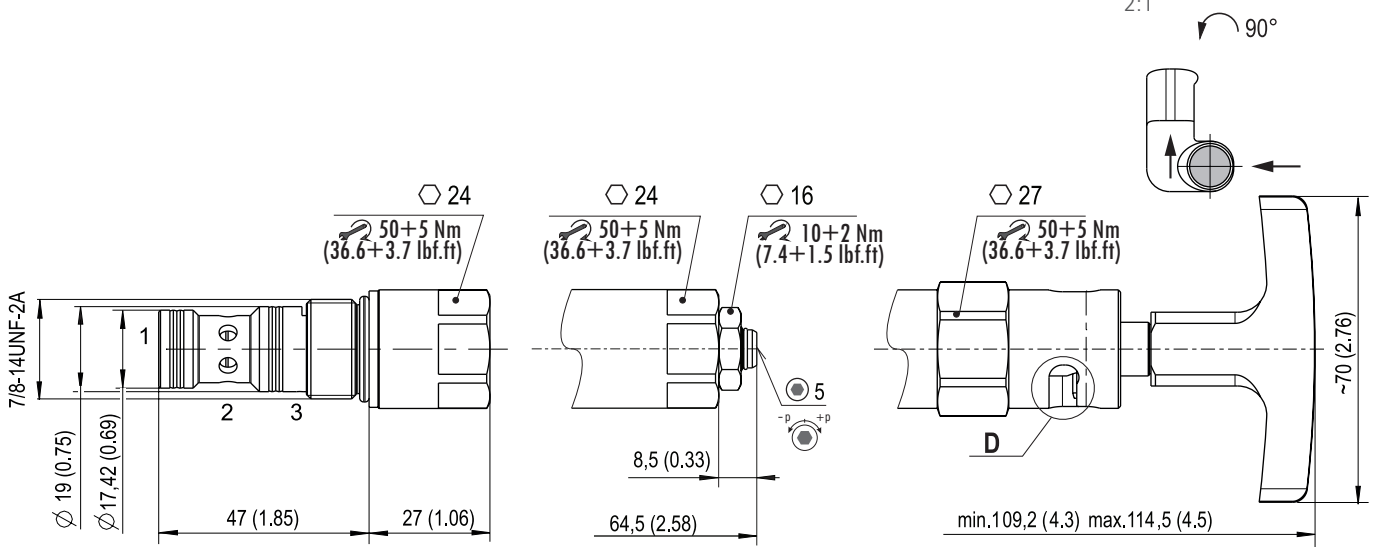
Dimensions in millimeters (inches)

Model C

Model S

Model A

Detail D



Ordering Code

SL2H-BP3 / H 2I12- [] - [] - [] - [] - B

Logic valve, spool type, cartridge

High performance

Version

Normally closed (NC)

Pressure level

- 0.5 bar (7 PSI)
- 3.0 bar (44 PSI)
- 6.0 bar (87 PSI)
- 10 bar (145 PSI)
- 14 bar (203 PSI)
- 20 bar (290 PSI)

- 005
- 030
- 060
- 100
- 140
- 200

Surface treatment
zinc-coated (ZnNi), ISO 9227 (520 h)

Seals
No designation
V
NBR
FPM (Viton)

Orifice
No designation
D05
without orifice
0.5 mm (0.02 inch)

Adjustment option
C fixed setting, not adjustable
S allen key (hex. 5), without protective cap*
A grip with locking function**

*Adjustment range 10 – 100 % of maximum value from selected pressure level.

**The grip with locking function is useable only up to operating pressure 250 bar (3626 PSI).