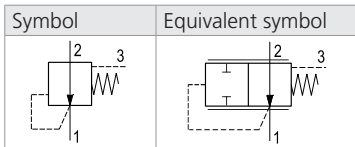
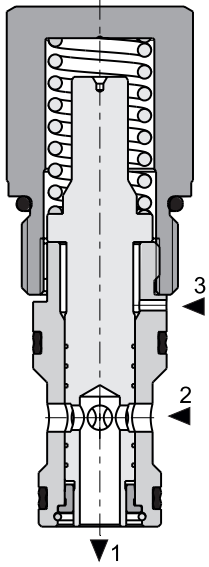


SL2H-BP3/H2I11

7/8-14 UNF • Q_{max} 80 l/min (21 GPM) • p_{max} 350 bar (5100 PSI)

SL2H-BP3/H2I11*



Technical Features

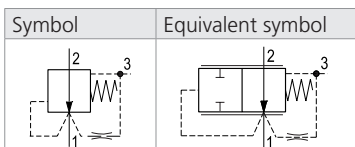
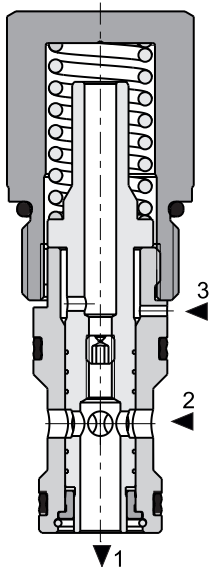
- › 2 Way Pressure Compensator or main stage of pilot operated pressure reducing valve
- › High flow capacity
- › The valve maintains a constant pressure drop on a flow control valve (e.g. proportional directional control valve) and thus a constant volumetric flow independent of actuator load
- › SL2H-BP3/H2I11*D05* valve is usable as the main stage of pilot operated pressure reducing valve
- › Rapid and smooth response to load changes
- › Stable function throughout the whole flow range
- › Hardened precision parts
- › Pressure drop adjustable
- › In the standard version, the valve is zinc-coated for 520 h protection acc. to ISO 9227

Technical Data

Valve size / Cartridge cavity		7/8-14 UNF-2A / BP3 (C-10-3S)
Max. operating pressure	bar (PSI)	350 (5080)
Max. flow	l/min (GPM)	80 (21)
Fluid temperature range (NBR)	°C (°F)	-30 ... +100 (-22 ... +212)
Fluid temperature range (FPM)	°C (°F)	-20 ... +120 (-4 ... +248)
Hysteresis	%	< 5
Weight (acc. to type of pressure adjustment)	C	0.17 (0.37)
	S	0.27 (0.60)

	Datasheet	Type
General information	GI_0060	Products and operating conditions
Valve bodies	In-line mounted	SB-BP3*
	Sandwich mounted	SB-04(06)_0028
Cavity details / Form tools	SMT_0019	SMT-BP3*
Spare parts	SP_8010	

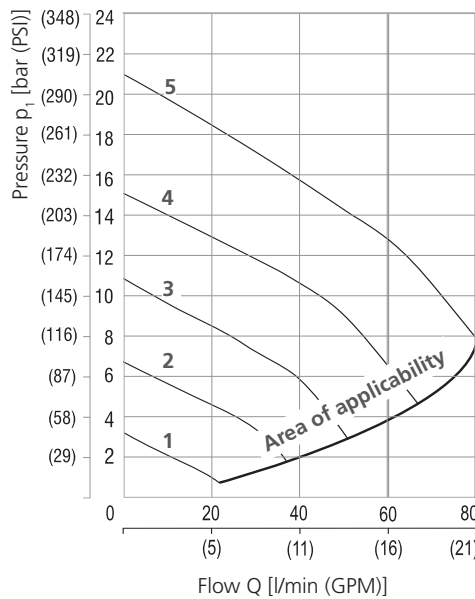
SL2H-BP3/H2I11*D05*



Characteristics measured at $v = 32 \text{ mm}^2/\text{s}$ (156 SUS)

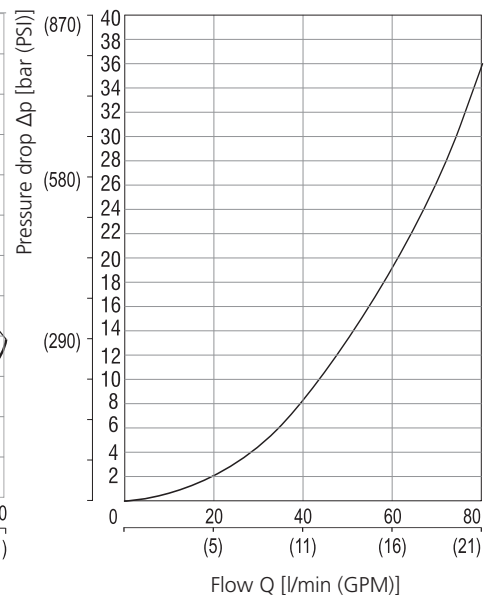
Reduced pressure related to flow rate

direction 2→1, port 3 without pressure
port 2 inlet pressure 100 bar (1450 PSI)



Pressure drop of fully open valve related to flow rate

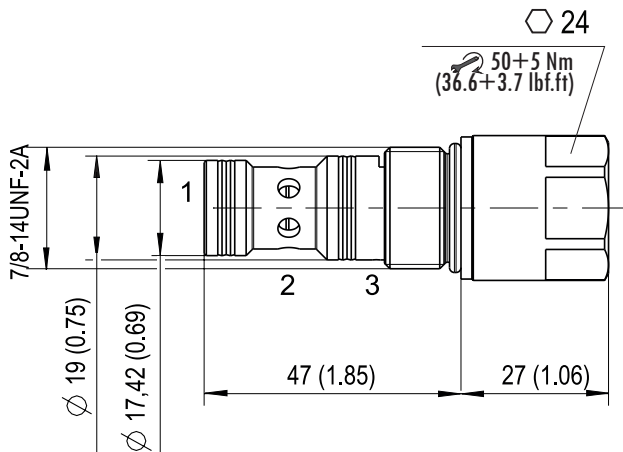
direction 2→1, port 3 pressure 350 bar (5076 PSI)



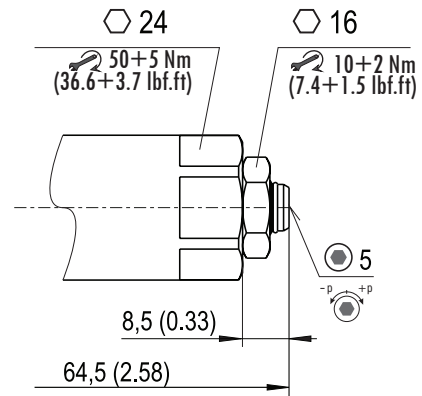
	Pressure level	
5	200	20 bar (290 PSI)
4	140	14 bar (203 PSI)
3	100	10 bar (145 PSI)
2	060	6.0 bar (87 PSI)
1	030	3.0 bar (44 PSI)

Dimensions in millimeters (inches)

Model C



Model S



Ordering Code

SL2H-BP3 / H 2I11- [] - [] - [] - [] - B

Logic valve, spool type, cartridge

High performance

Version

Normally open (NO)

Pressure level

3.0 bar (44 PSI)

6.0 bar (87 PSI)

10 bar (145 PSI)

14 bar (203 PSI)

20 bar (290 PSI)

030

060

100

140

200

Surface treatment
zinc-coated (ZnNi), ISO 9227 (520 h)

No designation
V

Seals
NBR
FPM (Viton)

No designation
D05

Orifice
without orifice
0.5 mm (0.02 inch)

C

S

Adjustment option
fixed setting, not adjustable
allen key (hex. 5), without protective cap*

*Adjustment range 10 – 100 % of maximum value from selected pressure level.