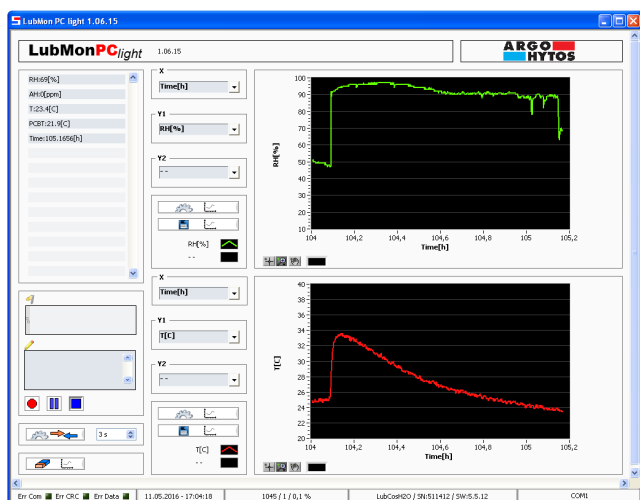


PC-Visualization and Recording Software for Condition Sensors

LubMon PC_{light}

Continuous Oil Condition Monitoring



LubMon PC_{light}

Description

Application area

The software LubMon PC_{light} allows recording, storing and visualizing the incoming data from the condition sensors.

Performance features

The scope of operation of the LubMon PC_{light} is specified below:

Communication

- › communication optionally over RS 232 journal or TCP/IP
- › free selection of IP-address, port number and COM-Port
- › free adjustability of the sampling rate

Graphical visualization of the measured data

- › two diagrams with respectively two y-axis and one x-axis
- › flexible axis assignment
- › logarithmic and linear axis display
- › diverse zoom and formatting options
- › list display of the currently measured data and units

Storing

- › start/stop-function for automatic storing
- › storing in .txt-format with header for series of measurement and labeling of the units
- › recording of the current timestamp

Others

- › intuitive operation

System requirements

The software is written in NI-LabVIEW. For operation, the current runtime environment LabVIEWRun-Time Engine and the NI.Visa Runtime Engine are necessary. This can optionally be downloaded together with the program in packet.

The system requirements apply to the requirements of the runtime environment.

The following operating systems are supported:
from Windows 2000 on.

Software

The software can be downloaded from our website at www.argo-hytos.com > Products > Sensors & Measurements > Software.

LubMonPC_{light} available at www.argo-hytos.com

Supported sensors

LubCos H ₂ O	SCSO 300-1000
LubCos H ₂ O+ II	SCSO 100-1010
LubCos Level 200	SCSO 150-1200
LubCos Level 375	SCSO 150-1375
LubCos Level 615	SCSO 150-1615
OPCom	SPCO 300-1000
OPCom FerroS	SPCO 500-1000

Accessories

Contact box for connection of a data cable, M12 x 1, 8-pin	SCSO 100-5010
Data cable with open ends (5 m / 16 ft)	SCSO 100-5020
Complete data cable set, M12 x 1, 8-pin, (5 m / 16 ft)	SCSO 100-5030
USB adapter - RS 232 serial	PPCO 100-5420
Power supply	SCSO 100-5080
Ethernet - RS 232 gateway for sensor connection	SCSO 100-5100