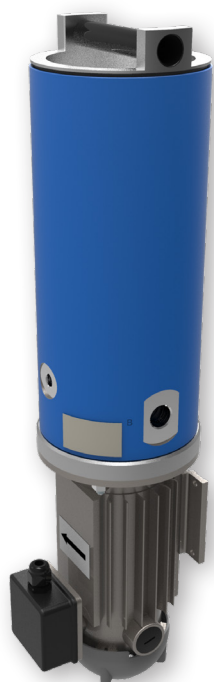


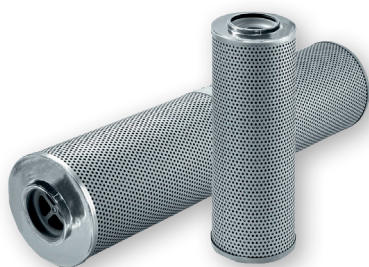
Off-line Filter Unit with DC motor

FNA 014

Operating pressure up to 4 bar / 58 psi · Nominal flow rate up to 14 l/min / 4.2 gpm · 24 VDC electric motor S1 duty cycle



FNA 014 Off-line Filtration Unit



EXAPOR®MAX 2 Filter Elements

Description

The FNA 014 is an off-line filter unit designed for installation in hydraulic or lubrications systems. The unit can be equipped with a 24 or 12 VDC electric motor. The EXAPOR®MAX 2 ultra-fine filter element is the heart of the FNA 014. A high separation efficiency guarantees excellent fluid cleanliness levels and thereby maximum protection of the machine. Optionally, the unit can be equipped with EXAPOR® AQUA elements which remove both water and solid particles. The high dirt holding capacity of the filter elements makes the FNA 014 an economical choice for our customers.

Characteristics

Pump design

Gerotor pump

Hydraulic fluids

Mineral oil and biodegradable fluids (HEES and HETG, see info service sheet 00.20). Other fluids on request.

Temperature range of fluids

0 °C ... +65 °C / +32 °F ... +149 °F

Ambient temperature range

0 °C ... +50 °C / +32 °F ... +122 °F

Viscosity range

15 - 200 mm²/s - continuous operation
15 - 400 mm²/s - short-term operation

Operating position

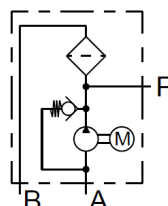
Vertical, motor at the bottom

Recommended tank capacities

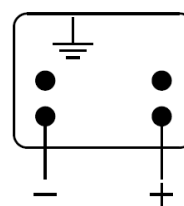
100 l ... 1500 l / 25 ... 400 gal

Symbols / Connections

1. Hydraulic



2. Electric*



* Current consumption (tested with oil VG 46, temp. +20 °C / +68 °F):
- free flow, no. filter element: 5 A
- closed flow (by-pass valve opened): 10 A

| Technical data | |
|---|---|
| Nominal flow rate | up to 14 l/min / 3.7 gpm |
| Operating pressure | max. 4 bar / 58 psi |
| Filter fineness (Bx(c) = 200 according to ISO 16889:1999) | 3 µm EXAPOR®AQUA 7 µm |
| Dirt-holding capacity | up to 280 g |
| Water capacity | up to 340 ml |
| Electric motor* | 24 VDC; 280 W; S1 |
| Suction port (inlet)** | G¾ |
| Pressure port (outlet)** | G½ |
| Suction height max. | 1.5 m / 4.9 ft |
| Weight | approx. 11 kg / 24.3 lbs |
| Recommended clogging indicator | DG 200-16 Others: see data sheet 60.20 |

| Order code | |
|---------------|---------------------------|
| FNA 014-16553 | 3 µm EXAPOR®MAX 2 element |
| FNA 014-16555 | 7 µm EXAPOR®AQUA element |

Other versions available on request.

| Spare filter element code | Fineness Bx(c) = 200 | Dirt / water capacity at 14 l/min / 3.7 gpm |
|---|----------------------|---|
| V7.1220-113 | 3 µm | 280 g |
| V7.1220-13 | 5 µm | 270 g |
| V7.1220-06 | 10 µm | 240 g |
| EXAPOR®AQUA for filtration combined with dewatering | | |
| Y7.1220-05 | 7 µm | 120 g / 340 ml |
| Y7.1220-113 | 3 µm | 190 g / 300 ml |

* Version with 12 VDC motor available on request.

** Versions with UNF ports available on request.

Dimensions

