

Oil Service Unit

FA 016-1160

Easy filling and cleaning · Nominal flow rate up to 16 l/min / 4.2 gpm · Operating pressure up to 30 bar / 435 psi



Oil Service Unit FA 016-1160

Description

FA 016-1160

With the oil service unit FA 016-1160, hydraulic or lubricating systems can be easily filled or cleaned.

Suitable for up to 30 bar / 435 psi

The unit is designed to operate up to 30 bar / 435 psi filling or system pressure. This allows e.g. filling and filtering of transmission fluids over valve blocks.

Dirt-holding capacity

The dirt-holding capacity values in grams from the ISO MTD test dust are in accordance with the ISO 16889 requirements.

Hydraulic fluids

Mineral oil and biodegradable fluids (HEES and HETG, see info sheet 00.20). Other fluids on request.

Technical data	
Nominal flow rate	16 l/min** / 4.2 gpm**
Filter fineness	$\bar{\beta}_{3(c)} = 200^*$
Dirt-holding capacity	280 g*
Electric drive	1 ~ 230 V / 50 Hz; 1.5 kW, n = 3,000 min ⁻¹
Weight	approx. 30 kg / 66 lbs
Temperature range of fluids / viscosity range	0 °C ... +60 °C +32 °F ... +140 °F
Continuous operation min.	15 mm ² /s / 70 SUS
Continuous operation max.	400 mm ² /s / 1,860 SUS
Ambient temperature range	0 °C ... +50 °C +32 °F ... +122 °F
Operating pressure	Max. 30 bar / 435 psi
Clogging indicator	Optical differential pressure indicator

* with test dust ISO MTD according to ISO 16889

** Indications at 50 Hz. At 60 Hz, the value increases by approx. 20%.

Order No.

FA 016-1160

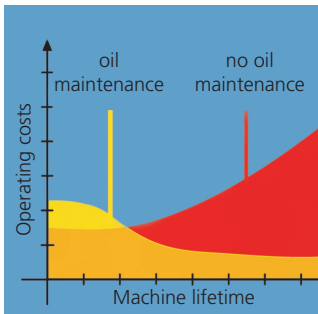
Replacement filter element Order No.

V7.1220-163



Compact and ready to connect

The FA 016-1160 comes ready to connect, with hose packages and filter element.



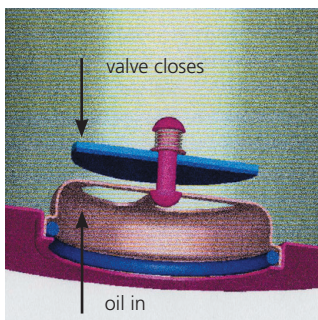
Economical

Das FA 016-1160 oil service unit offers protection that can extend the lifetime of machinery. This protection gives a direct return on investment through extended service intervals and increased machine availability.



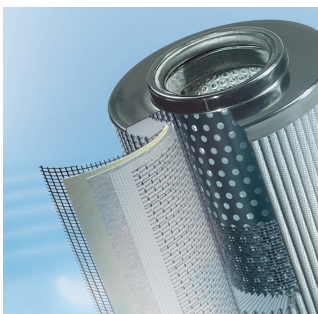
User-friendly filter element change

The filter element can be removed from the housing together with the cover. The dirt retention valve ensures that solid particle sediment is completely removed with the filter element.



Maintenance-free filter housing thanks to a unique filter element technique

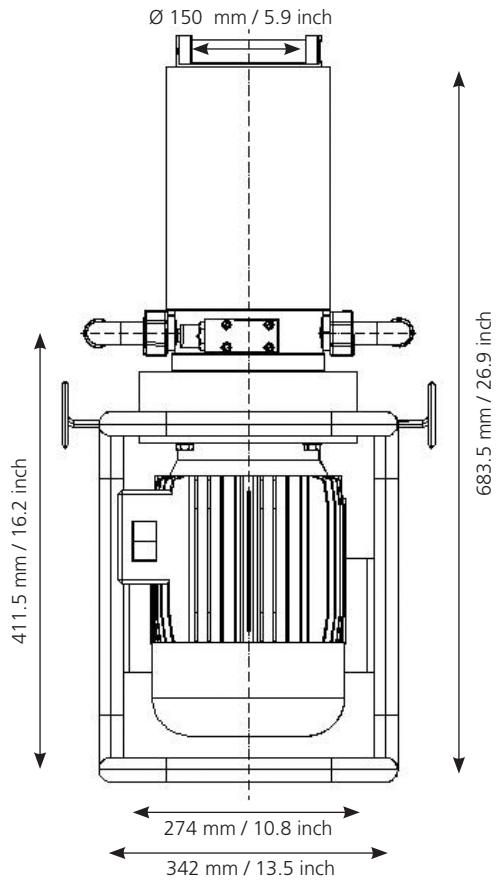
Fluid flows through the element from the inside to the outside. The built-in dirt retention valve closes automatically when the element is removed, ensuring that all dirt is removed from the housing together with the element.



Quality in detail

The EXAPOR®MAX 2 ultra-fine element is the heart of the FA 016-1160. High cleanliness levels protect the system from contamination when filling with oil.

Dimensions



Hydraulic symbol

