

CME Accessories

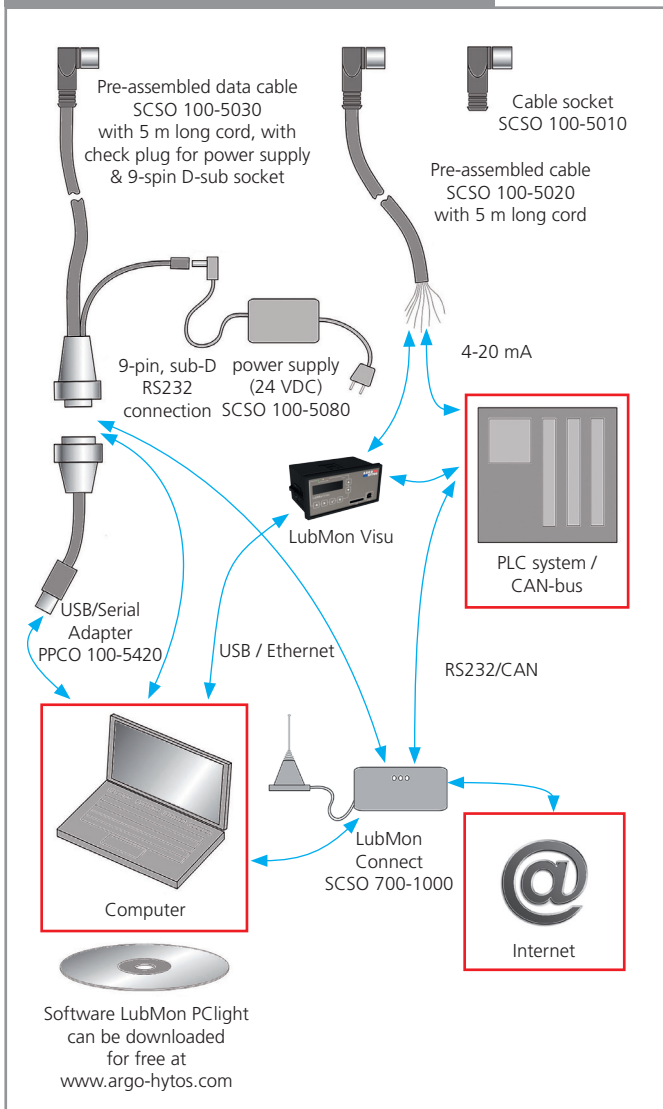
Connection Options

Continuous Fluid Condition Monitoring



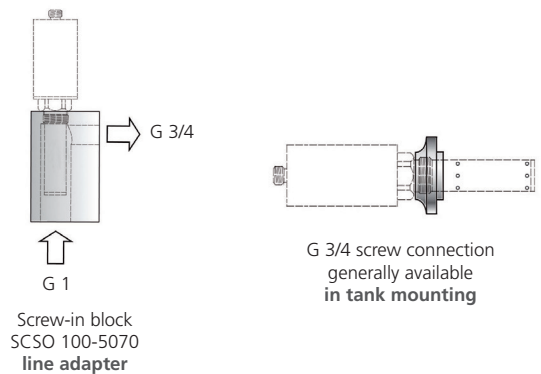
Product	Ordering Code
LubCos H ₂ O	SCSO 300-1000
LubCos H ₂ O <i>plus</i> II	SCSO 100-1010
LubCos <i>Visplus</i>	SCSO 200-1010
LubCos Level	Level 375 SCSO 200-1010 Level 615 SCSO 150-1615
OPCom FerroS	SPCO 500-1000
OPCom PM	SCSO 300-1000
LubMon Visu	Standard version SCSO 900-1000 Ethernet version SCSO 900-1010

Communication/Power Connections (a)



Mounting Options (b)

LubCos

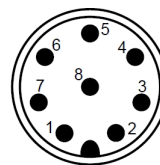


OPCom II

Minimes coupling with integrated faceplate for
 - medium pressure SPCO 300-5105
 - high pressure SPCO 300-5140

Flow controller for variable pressure range
 - SPCO 300-5100

Sensor plug 8-pin M12x1 (a)



Pin	Function
1	Power supply L+
2	Power supply L-
3	TxD, CAN low [OUT]
4	RxD, CAN high [IN]
5	Digital Input (start/stop)
6	Analog output 4...20mA
7	Switch output (open collector/alarm)
8	Signal ground
Shield	-

Above displayed examples show the connection of the ARGO-HYTOS oil condition sensors and the use of available accessories. If you are interested in an individual solution for condition monitoring, we will be pleased to support you in the selection of products. Please follow the installation instructions in the manual.